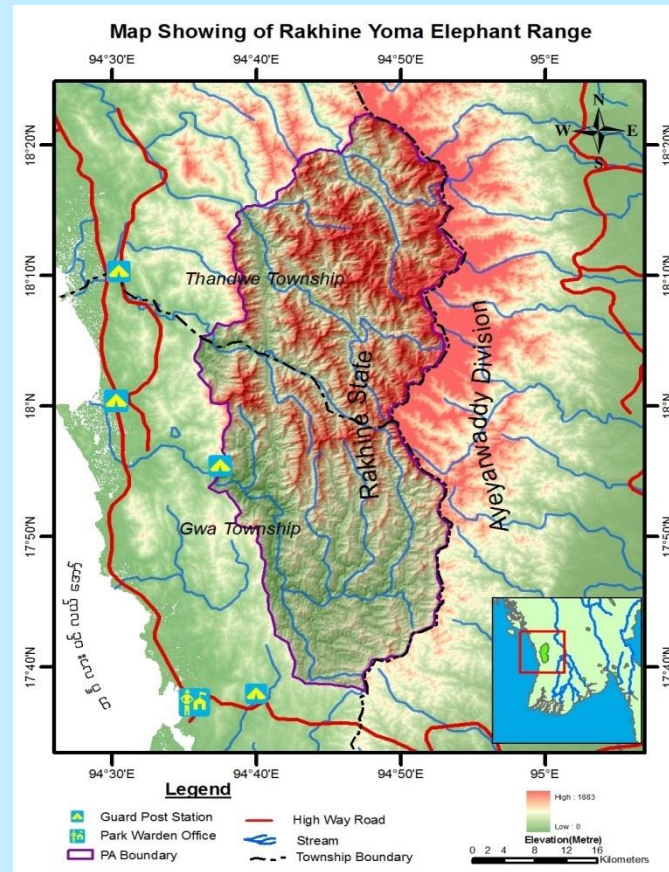


Provision to Local People

- Non-timber forest products
- Medicinal plants
- Job and income opportunities from ecotourism
- Collaboration with Friends of Wildlife (FoW) support community forestry establishment to be an alternative way of hunting, availability of water and basic education
- Collaboration with Istituto Oikos support establishment of community forestry and revolving fund to scale up Community-based wildlife monitoring and reporting
- Benefits from conservation of water resources

Ecotourism Services

- ❖ A guest house for 5 persons
- ❖ 4 forest camps
- ❖ 2 elephants for carrier
- ❖ Local guides



Accessibility

By car-

From Yangon to Gwa 170 miles

To contact:

Park Warden Office, Yakhine Yoma Elephant Range, Gwa Township



Forest Department Nature and Wildlife Conservation Division Yakhine Yoma Elephant Range



Background

In 2002, established as Myanmar's first Elephant Range to protect Endangered Wild Elephant

Location and Area

It is located in Thandwe and Gwa Township Rakhine State with an area of 246144 acres

Objectives

- ❖ To protect wild elephants, biodiversity and their habitats
- ❖ To raise awareness of local communities for conservation
- ❖ To support socio-economic developments of local people by means of ecotourism

Geographic Features

South west part of Yakhine Yoma is bordered by bay of Bengal. Much of the area is characterized by mountain ranges and ravines.

Forest Types

- Evergreen forest and 70% of the area is covered by bamboo forest.

Fauna and Flora

- Mammal (40) spp.
- Bird (132) spp.
- Turtle (8) spp.
- Butterfly (26) spp.
- Insect (12) spp.
- Fresh water fish (40) spp.
- Wood (26) spp.
- Bamboo (9) spp.
- Rattan (4) spp.
- Orchid (40) spp.
- Medicinal Plant (60) spp.



Research Opportunities

- ◆ Biology and Ecology of Wild Elephants
- ◆ Biology of Rakhine Forest Turtle
- ◆ Species of orchid including tiger-lady
- ◆ Bird and butterfly species
- ◆ Mammal species
- ◆ Reptile species

Rakhine Forest Turtle

Myanmar Name- Rakhine Taung Late

English Name - Rakhine Forest Turtle

Scientific Name - *Heosemys depressa* (Snderon,1875)



Rakhine Forest Turtle is endemic species and it can only be found in Rakhing Yoma Range. It is listed as critically endangered species by International Union for Conservation of Nature (IUCN) Red Book due to the decline of its population. Ex-situ Conservation is being jointly conducted with Wildlife Conservation Society by doing research through captive breeding, hatching with farms established in the Rakhine Yoma Elephant Range.

Recreational Opportunities



- Habits of wild elephants in their natural habitat
- Elephant riding in the jungle
- Canoeing along the stream
- Scenic beauty
- Rakhine orchid species including tiger-lady



- Inhabitat of Turtle species
- Habits of wildlife
- Relationship between costal ecosystem and mountain ecosystem

